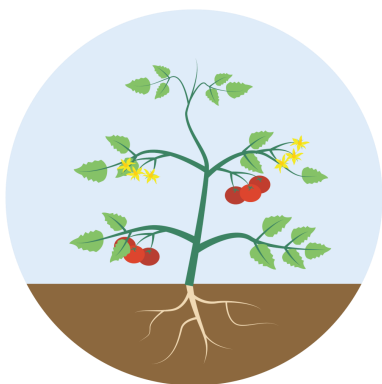


# WORLD OF PLANTS TRAIL

This trail belongs to: .....



**Labelling Game**



**Plant Spotting**



**Spotters Sheet**



**Browse ID**

**Plus a Glossary and a Quiz!**

## WORLD OF PLANTS TRAIL

# Spotter Sheet

Can you spot these different animals on your visit to the Park?  
Tick them off once you've spotted them.



Goat



Ring-Tailed Lemur



White Rhino



Frog



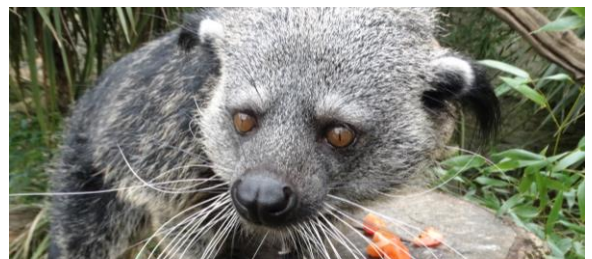
Anaconda



Clouded Leopard



Meerkat



Binturong

# WORLD OF PLANTS TRAIL

## Glossary

### **Browse** (*noun*)

Vegetation such as branches and young shoots, eaten by animals

### **Diet** (*noun*)

The kind of food that an animal or person normally eats

### **Cactus** (*noun*)

A plant with a thick stem, normally has no leaves but sharp spikes

### **Arid** (*adjective*)

An area that has little or no rain

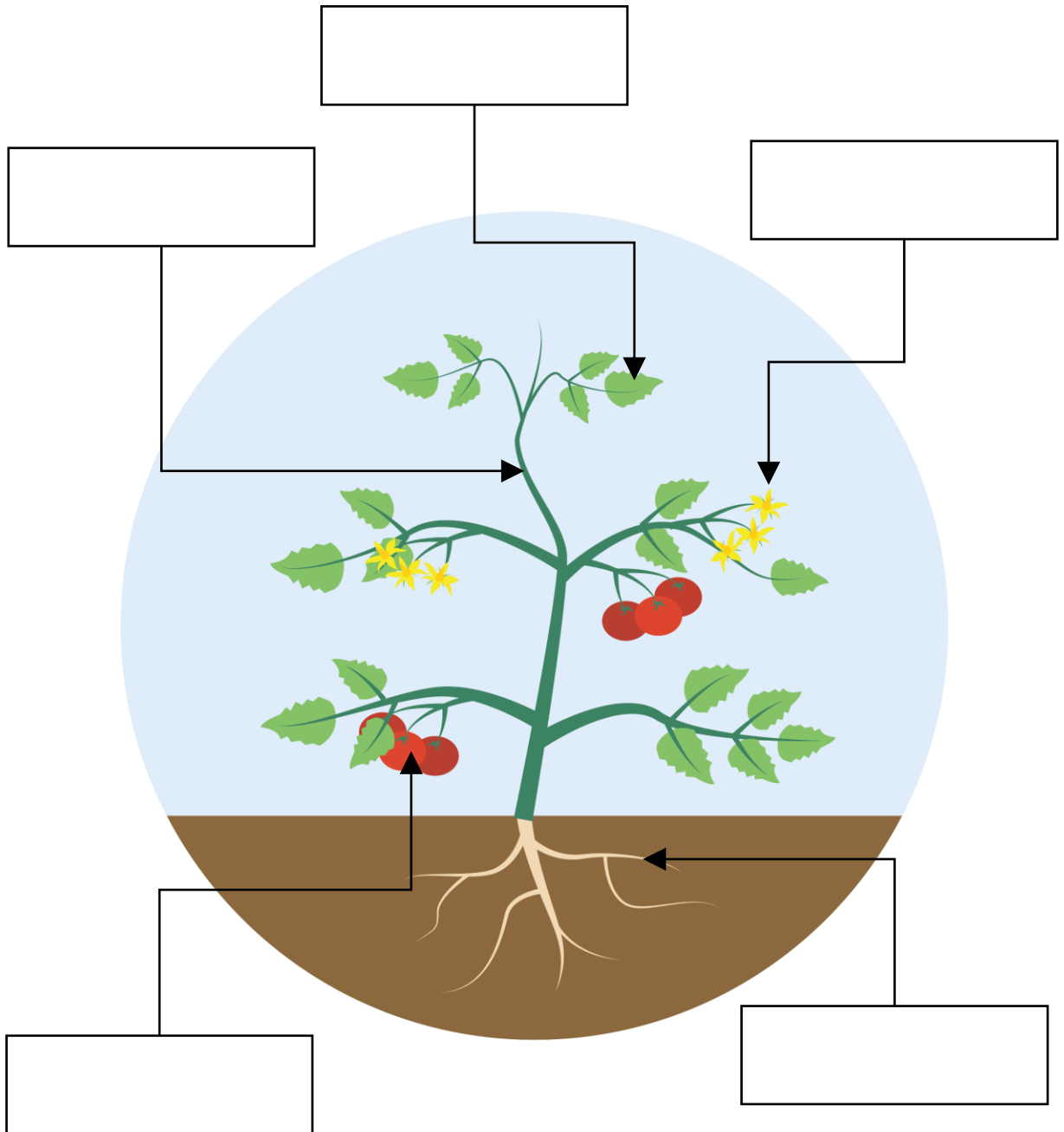
Use the words above to complete the sentences below

1. Giraffe can eat for 8 hours a day and so our keepers have to spend a lot of time collecting as much \_\_\_\_\_ as they can.
2. Meerkats live in desert habitats, this is a very \_\_\_\_\_ area to live as there is little or no rain.
3. All of the animals at the Park have very strict \_\_\_\_\_ designed by our vet. This makes sure that they get everything they need.
4. A \_\_\_\_\_ is very difficult to move into the greenhouse over the winter as it is covered in very sharp spikes. The gardeners have to move them though as they wouldn't survive being left out over winter.

# WORLD OF PLANTS TRAIL

## Labelling Game

Can you label the different parts of the tomato plant below?



## WORLD OF PLANTS TRAIL

# Plant Spotting

Can you spot these different plants on your visit to the Park? Tick them off once you've spotted them.



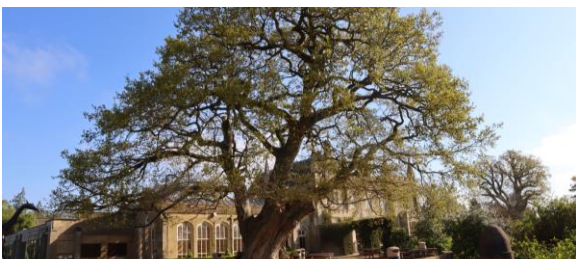
Bamboo

We grow lots of different types of bamboo across the Park, for lots of different purposes – see how many different types of bamboo you can spot!



Cacti

Depending on the time of year you can either find our cacti in the arid bed next to the meerkats or tucked up warm in the green house by the yellow mongoose.



Oak Tree

The oak tree by the restaurant is around 600 years old! They can get to 1,000 years old but are classed as ancient from 400.



Silver Birch

Easily spotted by its bright white bark! We have a number of silver birch trees around the Park, see how many you can spot.

## WORLD OF PLANTS TRAIL

# Browse ID

Browse is an important part of many of our animal's diets and being able to spot the different types is an important skill for any of our keepers, can you identify the different browse below by looking at their leaves?



**Hazel**



**Bamboo**



**Oak**



**Sycamore**

## WORLD OF PLANTS TRAIL

# Multiple Choice Quiz

Test what you've learned from your visit to the Park with these multiple-choice questions

**1. Which of these do you think is the oldest?**

- A. Cotswold Wildlife Park
- B. George the Giant Tortoise
- C. The oak tree by the restaurant

**2. What is browse?**

- A. Where an animal lives
- B. Branches eaten by animals
- C. An animal that only eats plants

**3. At what age is an oak tree considered ancient?**

- A. 100
- B. 400
- C. 1000

**4. How can you easily spot a silver birch tree?**

- A. The colour of its leaves
- B. The colour of its bark
- C. The shape of the tree

**5. Which of these lists are all parts of a plant?**

- A. Roots, flowers and leaves
- B. Carnivore, herbivore and omnivore
- C. Skin, bones and leaves

**6. How many hours a day does a giraffe spend eating?**

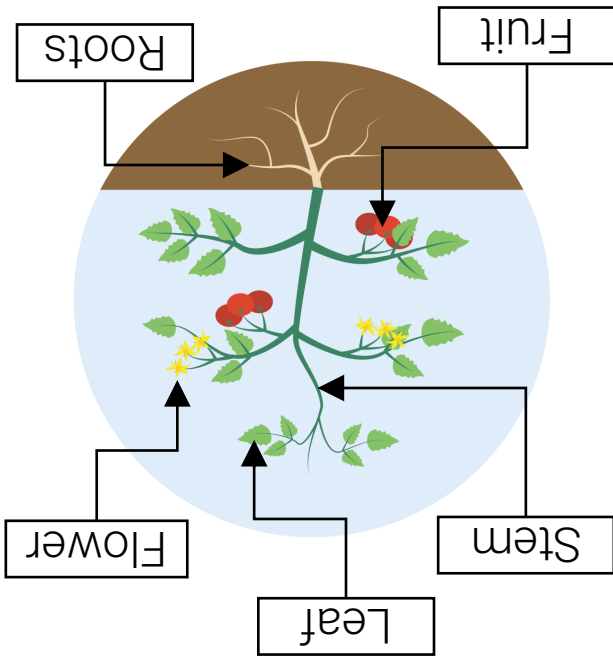
- A. 2 hours a day
- B. 4 hours a day
- C. 8 hours a day

# Answer Page

- 1. C
- 2. B
- 3. B

- 4. B
- 5. A
- 6. C

## Multiple Choice Quiz



A **CACTUS** is very difficult to move into the greenhouse over the winter as it is covered in very sharp spikes. The gardeners have to move them though as they wouldn't survive being left out over winter.

All of the animals at the Park have very strict **DIETS** designed by our vet. This makes sure that they get everything they need.

Meerkats live in desert habitats, this is a very **ARID** area to live as there is little or rain.

Giraffe can eat for 8 hours a day and so our keepers have to spend a lot of time collecting as much **BROWSE** as they can.

## Glossary