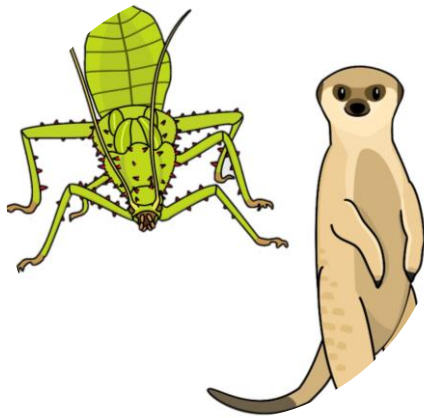


CLASSIFICATION CHALLENGE TRAIL

This trail belongs to:



Labelling Game



Group Matching



Spotters Sheet



Whose Baby

Plus a Glossary and a Quiz!

CLASSIFICATION CHALLENGE TRAIL

Spotter Sheet

Can you spot these different animals on your visit to the Park? Tick them off once you've spotted them. Can you write whether you think they are a Mammal, Bird, Reptile, Amphibian or a Fish?



Ostrich



Ring-Tailed Lemur



Guppy



Frog



Anaconda



Flamingo



Fiji Iguana



White Rhino

CLASSIFICATION CHALLENGE TRAIL

Glossary

Vertebrate (*noun*)

An animal that has a backbone, includes mammals, birds, reptiles, amphibians and fish.

Invertebrate (*noun*)

An animal that does not have a backbone, such as insects – worms and bugs.

Classification (*noun*)

Arranging animals and plants into groups by looking at their similarities.

Warm-blooded (*adj*)

An animal that maintains a constant body temperature, mainly birds and mammals.

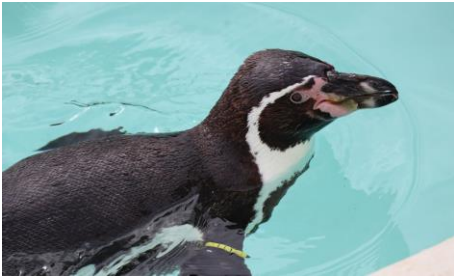
Use the words above to complete the sentences below

1. White rhinos have a backbone to support their body and are therefore called a _____ animal.
2. _____ is the name scientists use to put animals and plants into groups by looking at the features they have in common.
3. Reptiles are cold-blooded, which means they have to sit in the sun to warm themselves up. _____ animals are mammals and birds who heat their body themselves.
4. Insects like ladybirds and ants have a hard casing on the outside of their body. This is because they don't have a backbone, they are called _____.

CLASSIFICATION CHALLENGE TRAIL

Animal Groups Matching Game

Can you figure out which group these animals belong to. Draw lines to connect them up below.



MAMMAL



REPTILE



FISH



BIRD



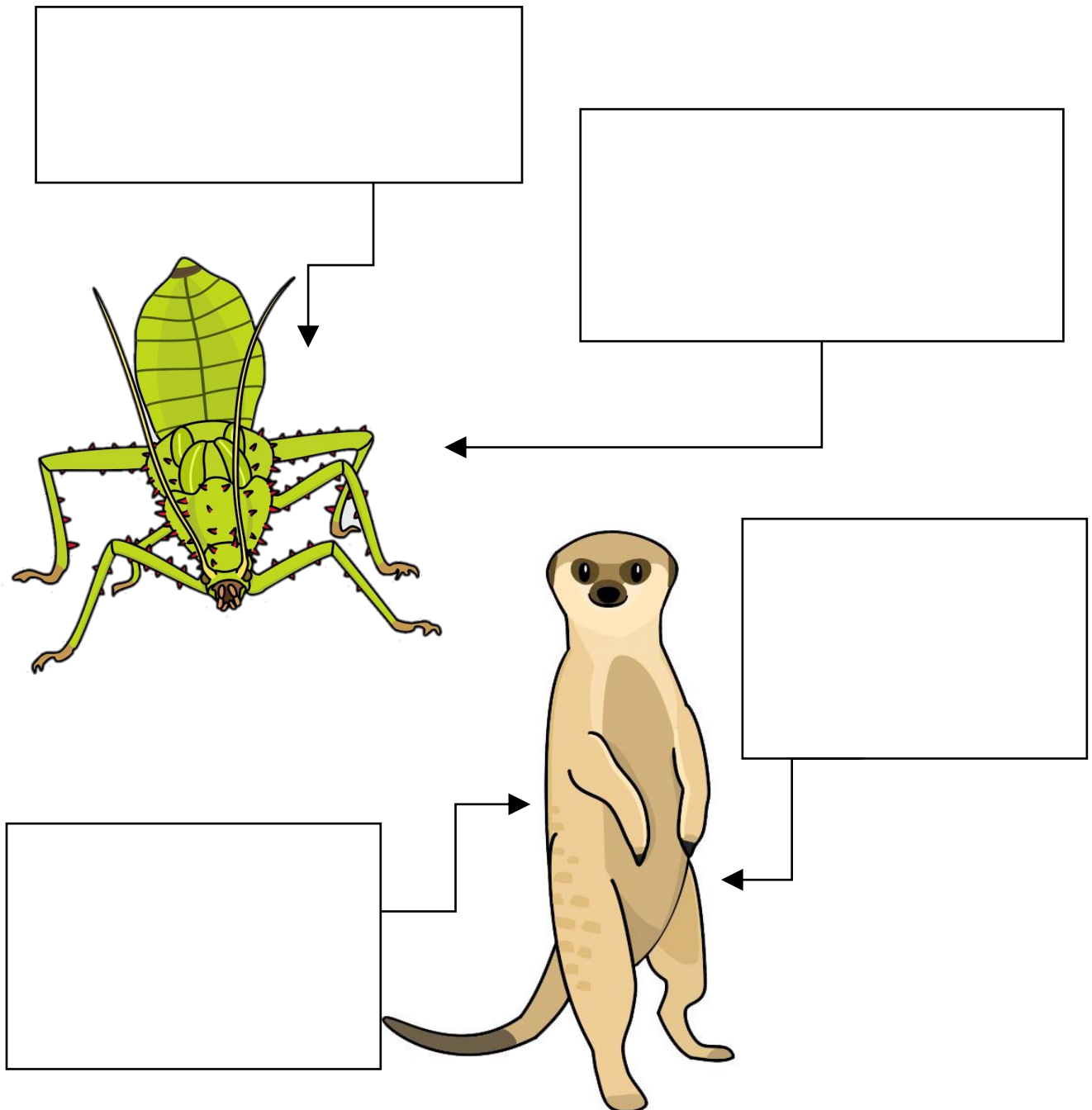
AMPHIBIAN

CLASSIFICATION CHALLENGE TRAIL

Labelling Game

Jungle Nymphs are an invertebrate animal and Meerkats are a vertebrate animal.

Write 2 things that you know about invertebrates and vertebrates on the pictures below.



CLASSIFICATION CHALLENGE TRAIL

Whose Baby is Whose?

Some animals lay eggs, others give birth to live babies. Can you work out which baby or egg belongs to which animal?



Humboldt Penguin

This animal lays eggs called spawn. The spawn hatches into tadpoles.



Green Tree Python

This animal gives birth to a very small baby, which crawls up it's mums tummy and climbs into a pouch. The baby stays in the pouch until it is about 6 months old.



Parma Wallaby

This animal lays 1 to 2 white eggs in a cave nest. Both the mum and dad will take it in turns to sit on the eggs to incubate them. After 40 days the eggs will hatch.



Mossy Frog

This animal lays between 10 and 30 soft white eggs, which are incubated for 50 days before they hatch.

CLASSIFICATION CHALLENGE TRAIL

Multiple Choice Quiz

Test what you've learned from your visit to the Park with these multiple-choice questions

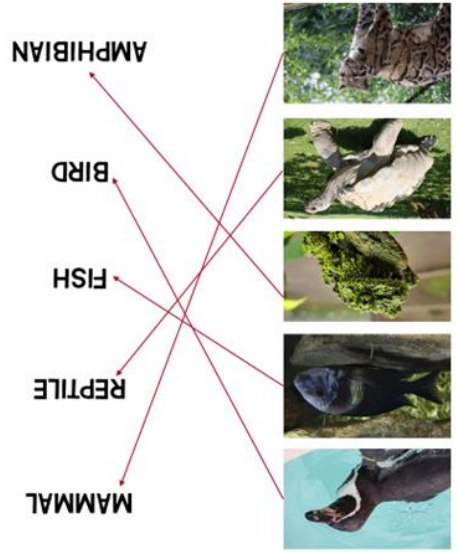
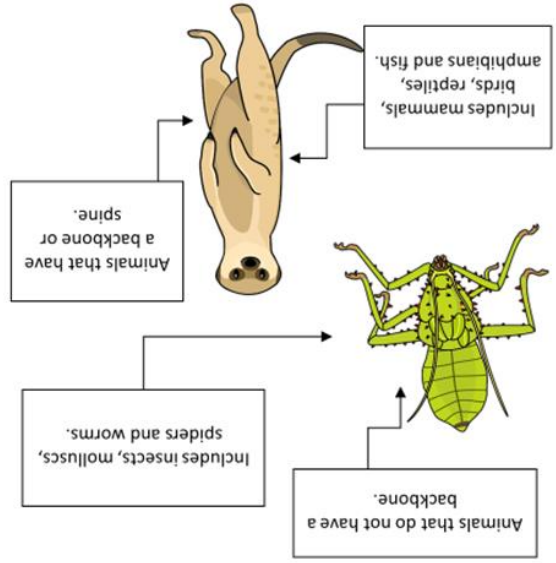
1. What does a bird have covering its body?
 - A. Scales
 - B. Skin
 - C. Fur
 - D. Feather
2. Mammals lay eggs, True or False?
 - A. True
 - B. False
3. Reptiles are cold-blooded, which other animal group is cold-blooded?
 - A. Birds
 - B. Mammals
 - C. Amphibians
4. Which animal group has scales covering its body?
 - A. Amphibians
 - B. Fish
 - C. Birds
 - D. Mammals
5. Vertebrates are animals that have a backbone, True or False?
 - A. True
 - B. False
6. Which of these animals is a reptile?
 - A. Penguin
 - B. Frog
 - C. Lion
 - D. Tortoise

CLASSIFICATION CHALLENGE TRAIL

Answer Page

Glossary

1. White rhinos have a backbone to support their body and are therefore called a **vertebrate** animal.
2. **Classification** is the name scientists use to put animals and plants into groups by looking at the features they have in common.
3. Reptiles are cold-blooded, which means they have to sit in the sun to warm themselves up. **Warm-blooded** animals are mammals and birds who heat their body themselves.
4. Insects like ladybirds and ants have a hard casing on the outside of their body. This is because they don't have a backbone, they are called **invertebrate**.



Multiple Choice Quiz

1. D
2. B
3. C
4. B
5. A
6. D